

REMATIC, DMS3,  
 24 V DC (2P )  
 (3P )  
 PROFIBUS DP V0/V1 MODBUS RTU.  
 : LED , RS-232).  
 a a  
 « - ».



**DMS3**

- 3x380 VAC
- 
- T
- a
- 60 % 100 %
- 
- 
- 7 R1, R2, RE1...RE 5 (18 )
- 2 READY
- - 0/4 - 20 mA, 4 - 12 mA, 12 - 20 mA 0/2 - 10 V
- 24 V DC - , ,
- 24 V DC - , ,
- 
- ESD ( )
- - 4 - 20 mA a ( )
- 24 V DC, 100
- 
- LED
- 
- ( , , .)
- RS 232
- 
- : ISO 5210 / F14- B3 , C, D 4x ( )
- 
- IP 55
- 
- 
- PROFIBUS DP V0/V1,
- MODBUS RTU,
- 55510 - , ISO 5210 / F14- ( )
- IP 67

MOR 4PA

157. x - x x x x x / x x

10)		12)		o e			
15150	( )	60721-2-1	(R)+WDr, MWDr, EWDr	C3	-25°C +55°C	IP 55	0
						IP 67	1
			(M)	C3	-40°C +40°C	IP 67	3
				C3	-25°C +55°C	IP 67	6
			(WW)	C4	-40°C +40°C	IP 67	7

		50 Hz		Y/D 400/230 V AC	Z501; Z556; Z557;	2
				Y/D 380/220 V AC	Z571	N
				Y/D 400/230 V AC	Z501a; Z556a; Z557a;	E
				Y/D 380/220 V AC	Z571a	F

31)			35) 3x400 (380) V, 50Hz				
32)		33)					
130 ÷ 250 Nm	150 Nm	100 Nm	10 min <sup>-1</sup>	370 W	919 min <sup>-1</sup>	1.20 A	A
			16 min <sup>-1</sup>	550 W	1395 min <sup>-1</sup>	1.46 A	C
			25 min <sup>-1</sup>	750 W	1395 min <sup>-1</sup>	1.91 A	E
			50 min <sup>-1</sup>	1250 W	1339 min <sup>-1</sup>	3.10 A	G

20		1 - 1000	-	H
		1 - 1000	Z473a	E

DMS3	2P	24 V DC		-	Z557; Z557a	F	
	3P/2P	0/4 - 20 mA	24 V DC		4 - 20 mA	Z501; Z501a	G
		0/2 - 10 V				Z556; Z556a	H
DMS3 M1	/ 2P	MODBUS RTU			24 V DC	Z571 Z571a	M
DMS3 M2			N				
DMS3 P1			P				
DMS3 P2			R				

e	DIN 3338	F14	C	20/Ø35/Ø52	P-2016 (P-2069)	P-2023	A
		F14	D	Ø35		P-2024	B
	ISO 5210	F14	B3	Ø30		P-2067	J
		F14	4- 45°/45°	Ø140		P-2029	0
e o	ISO 5210	F14	A	TR32	P-2066 (P-2069)	P-2027/A	G
	ISO 5210	F14	B2	Ø45		P-2028/A	I
	ISO 5210	F14	B1	Ø60		P-2028/B	H
	( 55510)	Ø135/4xØ13		5 Ø70/Ø85		P-2066/A	E

MOR 4PA

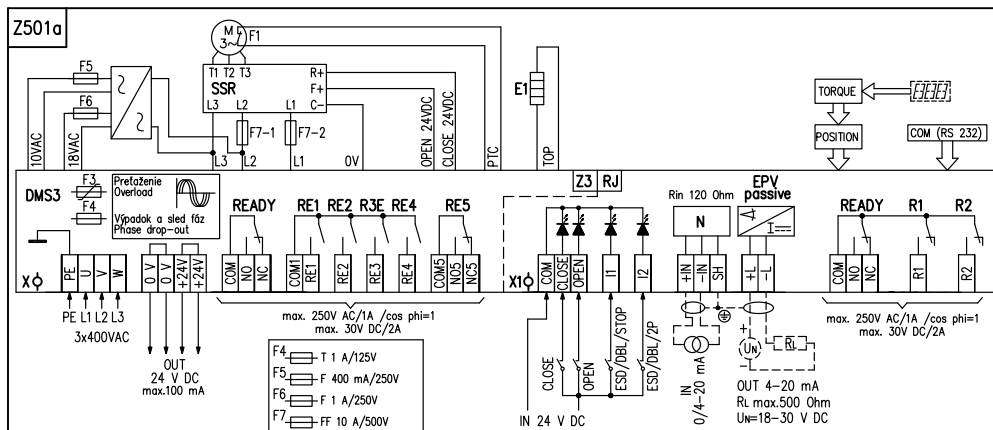
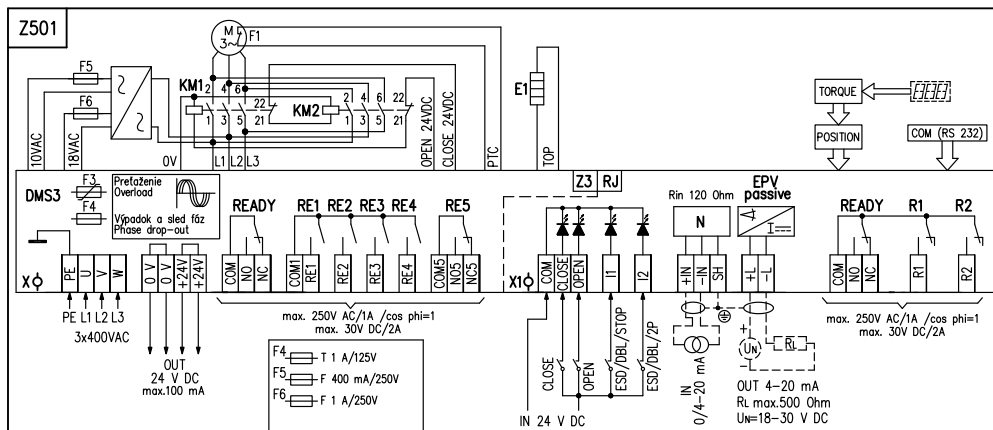
157. x - x x x x x x / x x

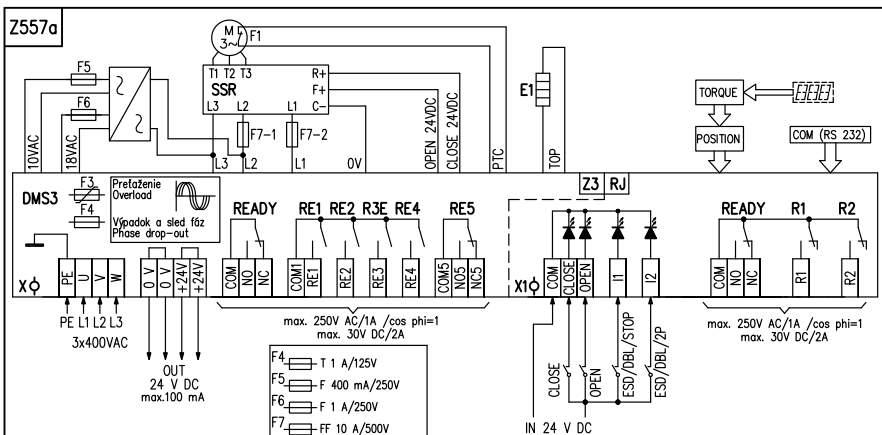
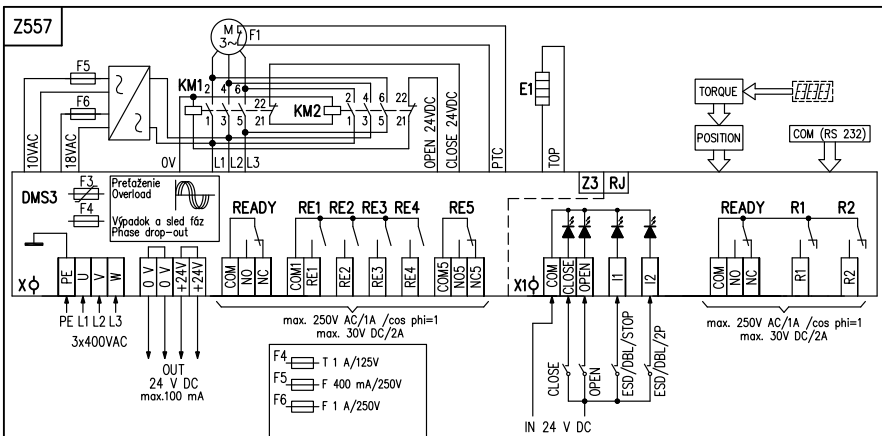
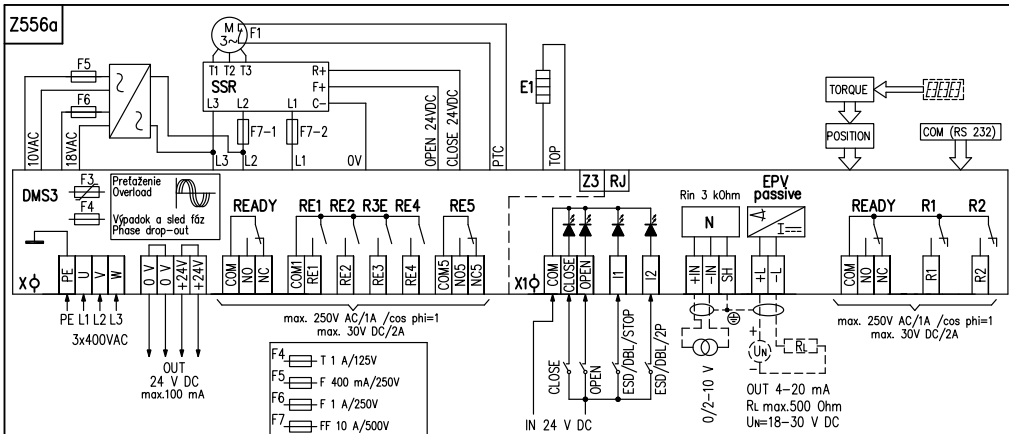
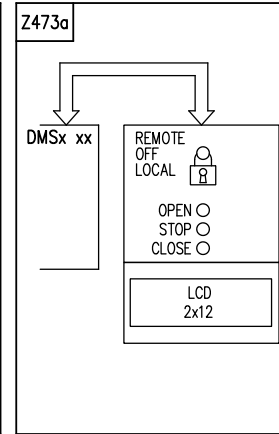
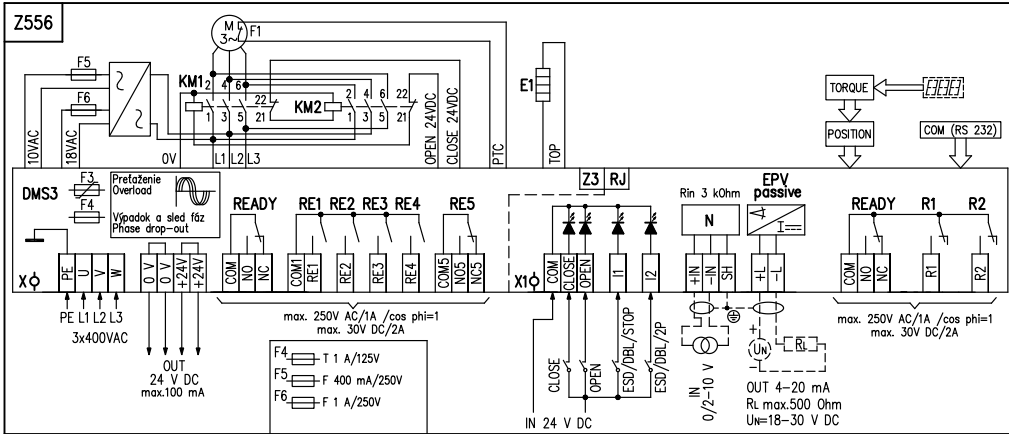
		20	0	0
A			0	1
B			0	3
		: A+B=20		

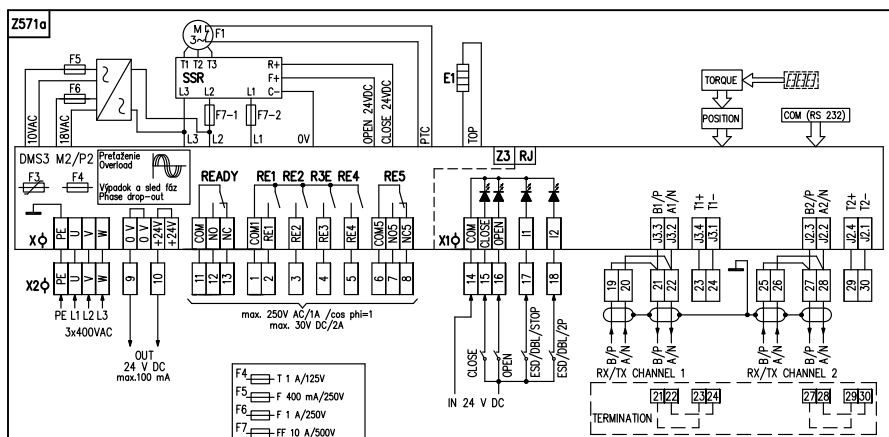
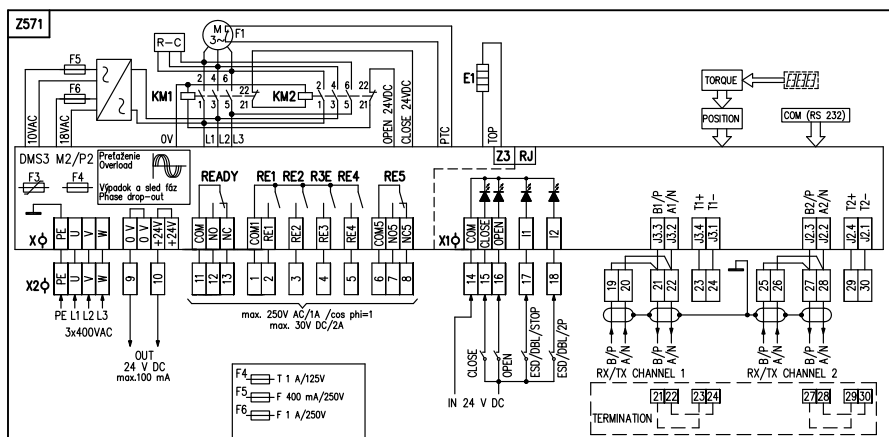
DB-9F/RJ45	224A80100
------------	-----------

- 10) « » .2 o « ».
- 12) ISO 9223 / EN ISO 12944-2.
- 31)
- 32) S2-10 S4-25%, 6-90 / .
- 33) S4-25%, 90-1200 / .
- 35) 3x400 VAC.

MOR 4PA







3 : M25x1,5 12,5 19 mm.

<b>X -</b>			
PE, U, V, W.....	(0,05 - 2,5 mm <sup>2</sup> )		3x400 / 3x380 V AC, 50 Hz
0 V, +24 V .....	(0,05 - 1 mm <sup>2</sup> )		24 V DC (100 mA)
COM, NO, NC .....	(0,05 - 1,5 mm <sup>2</sup> )	READY	
COM1, RE1, RE2, RE3, RE4 ...	(0,05 - 1,5 mm <sup>2</sup> )	RE1 RE4	
COM5, NO5, NC5.....	(0,05 - 1,5 mm <sup>2</sup> )	RE5	
<b>X1 -</b>			
COM, CLOSE OPEN, I1, I2 ...	(0,05 - 1 mm <sup>2</sup> )		24 V DC
+IN, -IN, SH.....	(0,05 - 1 mm <sup>2</sup> )		0/4-20 mA (0/2 - 10 V)
+L, -L .....	(0,05 - 1 mm <sup>2</sup> )		( ) 4-20 mA
COM, NO, NC .....	(0,05 - 1,5 mm <sup>2</sup> )	READY	
R1, R2.....	(0,05 - 1,5 mm <sup>2</sup> )	R1, R2	

READY R 1 R 2 . READY . R1 R2

Z473 .....	:	o o	
Z501 .....			0/4 - 20 mA c
4 - 20 mA	a	,	
Z501a .....			0/4 - 20 mA c
4 - 20 mA	a	,	c
Z556 .....			0/2 - 10 V c
4 - 20 mA	a	,	
Z556a .....			0/2 - 10 V c
4 - 20 mA	a	,	c
Z557 .....			
Z557a .....			
Z571 .....			
Z571a .....			

MODBUS / PROFIBUS  
MODBUS / PROFIBUS c

COM(RS232)..... PC  
 EPV passive ..... (EPV) 4-20 mA  
 E1 .....  
 F1 .....  
 F2 .....  
 F3 F6 .....  
 M3~ .....  
 N .....  
 R .....  
 POSITION .....  
 Rin .....  
 R<sub>1</sub> .....  
 UN ..... EPV  
 R1 .....  
 R2 .....  
 READY ..... ( )  
 RE1 o RE5 .....  
 TORQUE .....  
 DMS3 .....  
 ,

R1, R2, RE1, RE2, RE3, RE4, RE5:

READY: o ; o ; o ; o

( EPV ): 4-20 mA, 20-4 mA.

( ): 2P, 3P, 3P/2P I2.

(N): 4-20 mA, 20-4 mA, 0-20 mA, 20-0 mA, 4-12 mA, 12-4 mA, 12-20 mA, 20-12 mA;

: 2-10 V, 10-2 V, 0-10 V, 10-0 V

I1: ; ESD (Emergency shut down - I1 , ; !

I2: "); DBL( ; ESD (Emergency shut down - I2 , ; !

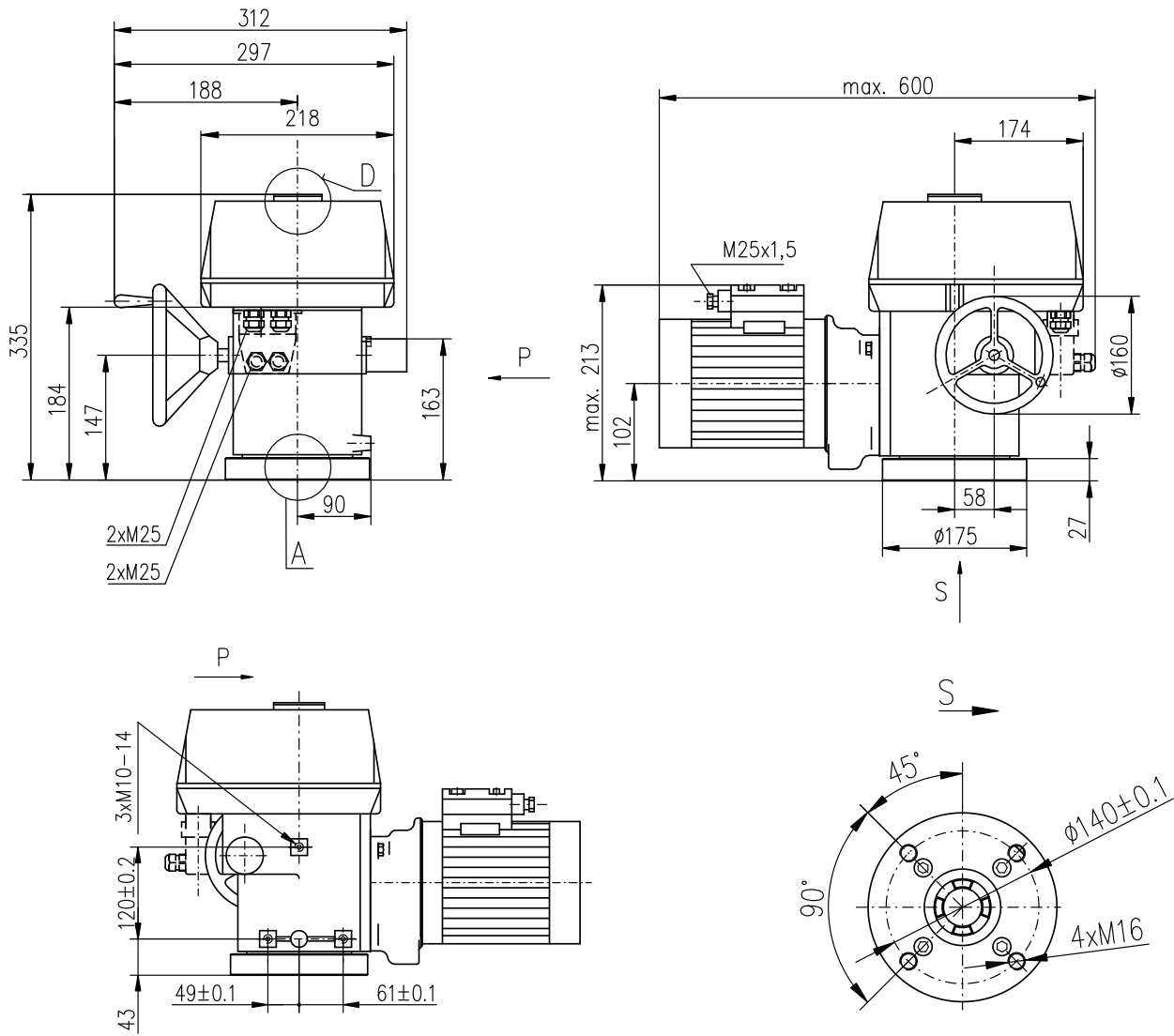
"); DBL( 3P/2P I2 I2 24 VDC). ); 2P (

o : ; ; ; ; ; ; ;

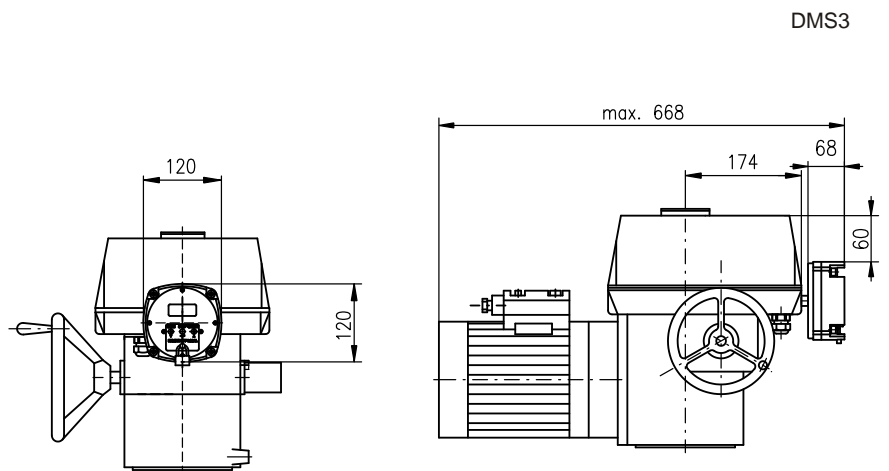
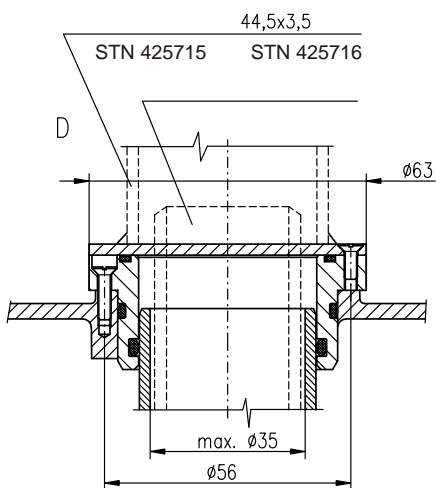
I1, I2 \_\_\_\_\_ ,  
 ESD I2).

ESD I1,

MOR 4PA

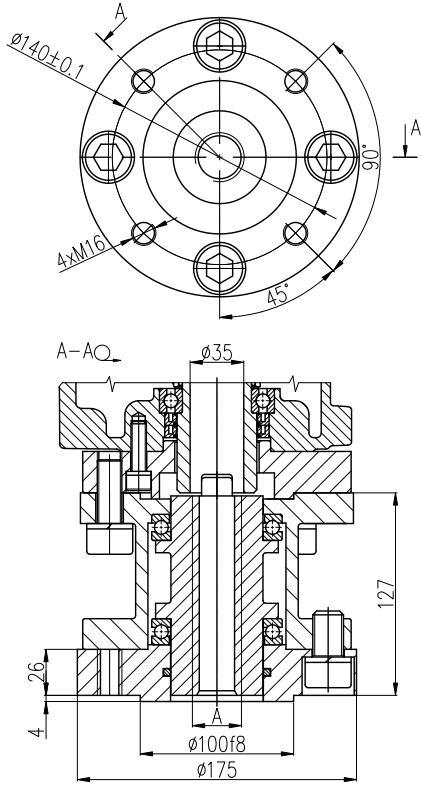


P-2016



P-2069

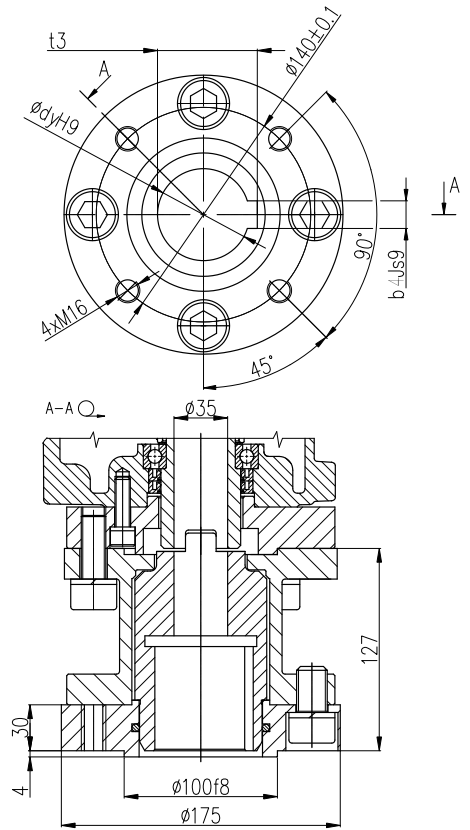
A



P-2027/A	Max. TR32
A	

P-2027/A

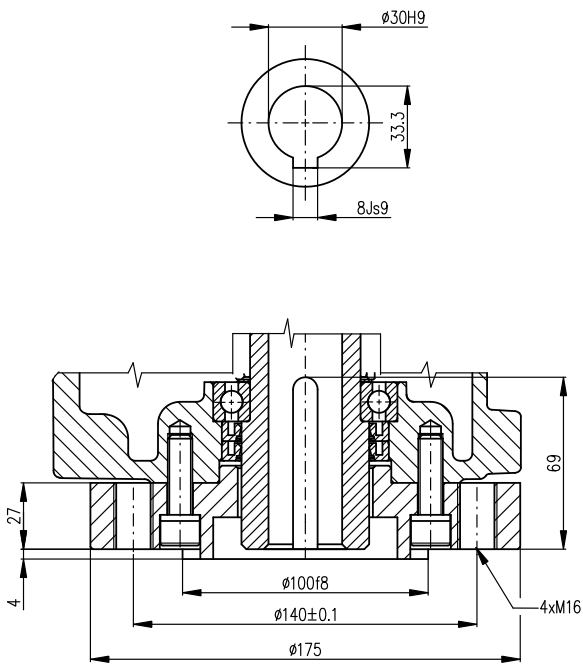
B1, B2



P-2028/B	∅60	18	64.4
P-2028/A	∅45	14	48.6
	dyH9	b4Js9	t3

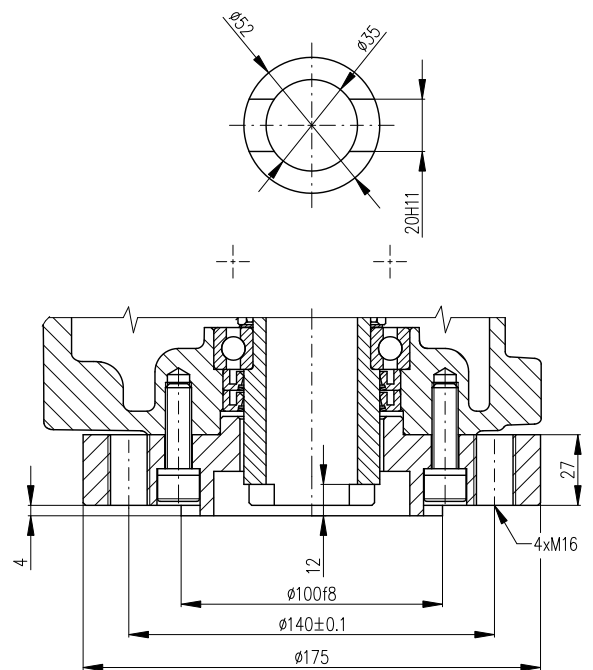
P-2028

B3



P-2067

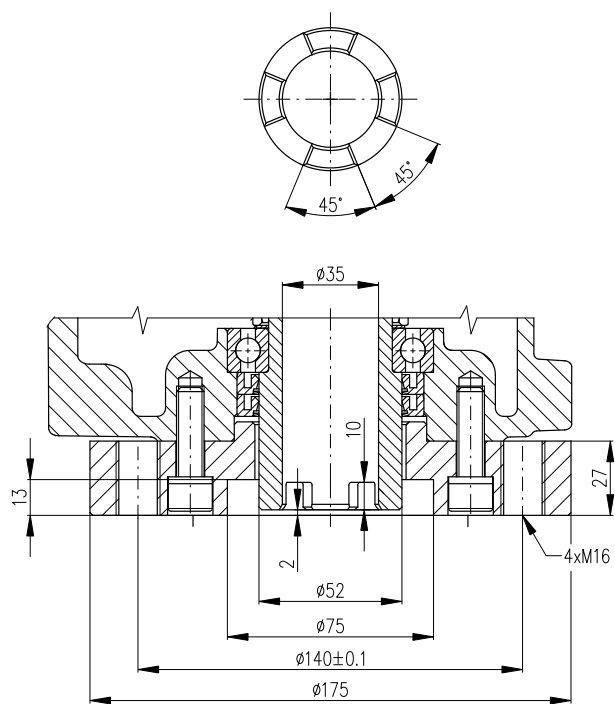
C



P-2023



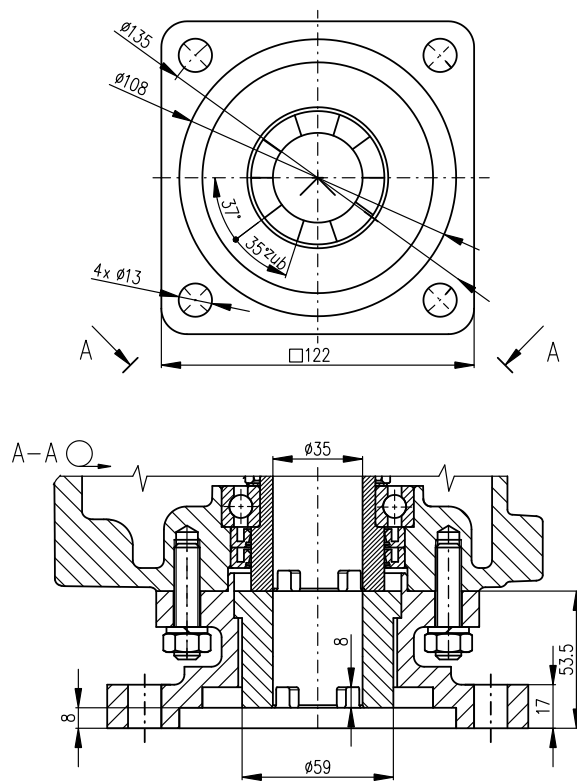
4x



P-2029

5x

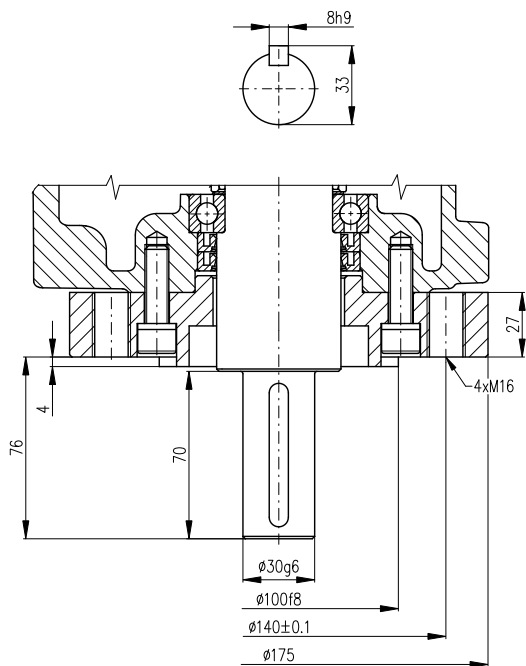
55510



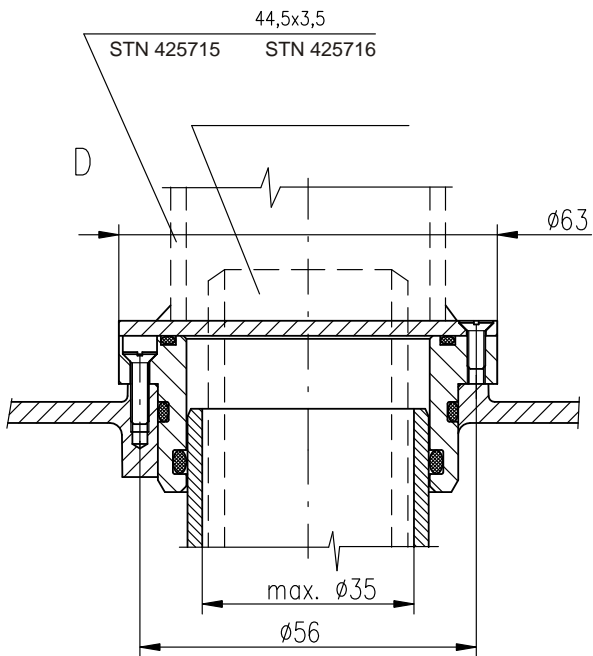
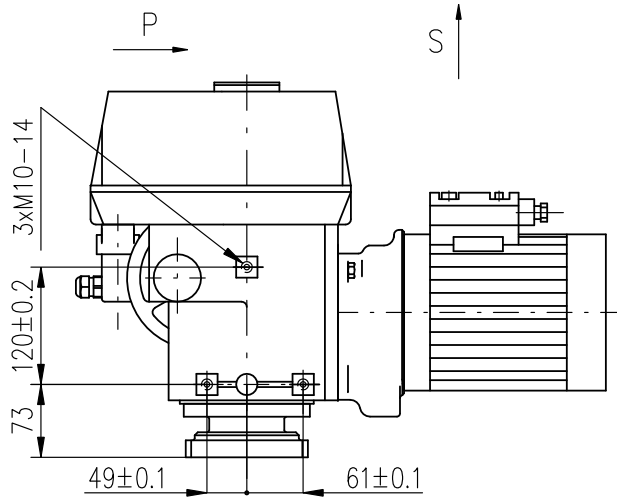
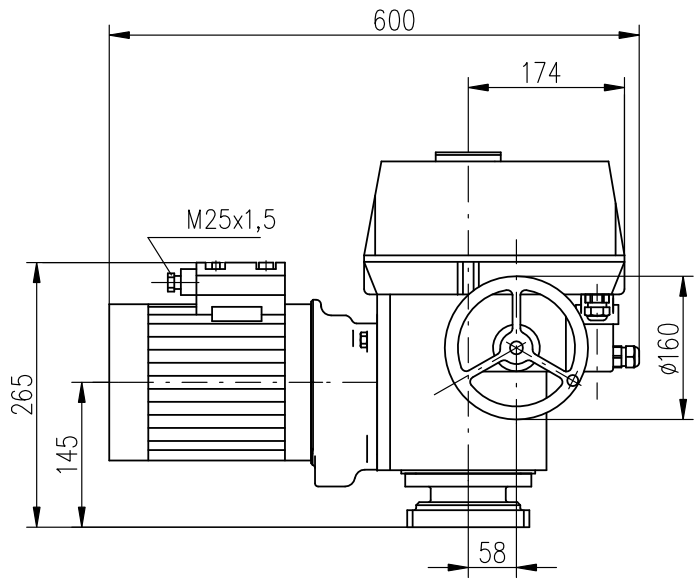
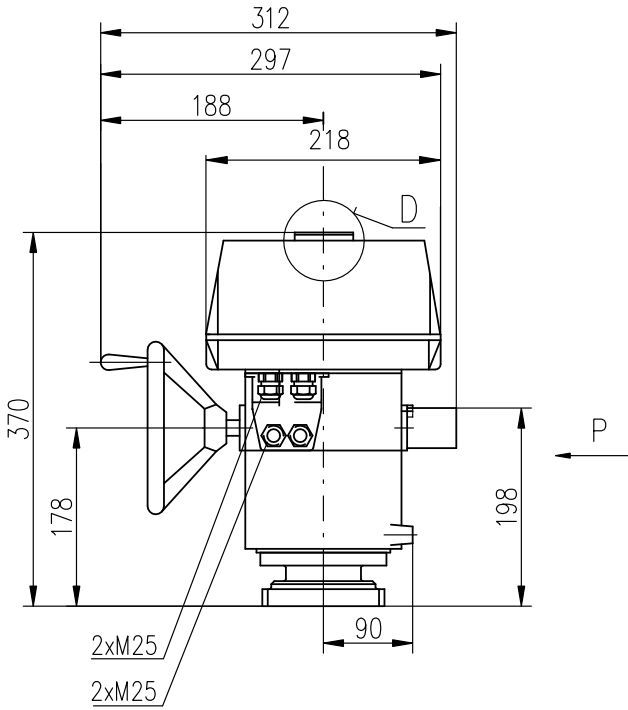
+ P-2066

P-2066/A

D



P-2024



P-2066